

# 2010 Kentucky Farm Bureau Beef Expo



**Charolais Show and Sale**  
**Saturday, March 6, 2010**  
**Show: 12 p.m. — Sale: 4:00 p.m.**



Kentucky Department of Agriculture



Kentucky Charolais Association



Kentucky Farm Bureau Association

### **Special Guests:**

Richie Farmer, Kentucky Commissioner of Agriculture

James Hayden, AICA, President

John Chism, AICA Area 11 Director

Nick Chism, AICA Area 11 Director

Darby Montgomery, Kentucky Charolais Association, President

Floyd Wampler, Charolais Journal Representative

### **Sale Auctioneer:**

Eddie Burks, Park City, KY 270-991-6398

### **Sale Manager:**

John E. Chism

1442 Lillies Ferry Road

Winchester, KY 40391

859-229-1767

### **Sale Day Contacts:**

John Chism 859-229-1767

Floyd Wampler 423-612-2144

Eddie Burks 270-991-6398

### **Online Bidding:**



Live Internet Bidding @ [www.edjecast.com](http://www.edjecast.com)  
Register to view or bid • No buyer's premium

[www.kybeefexpo.com](http://www.kybeefexpo.com)



Richie Farmer  
Commissioner



Kentucky  
Department of  
Agriculture

A Consumer Protection And Service Agency

32 Fountain Place  
Frankfort, KY 40601  
Phone: (502) 564-5126  
Fax: (502) 564-5016  
E-mail: richie.farmer@ky.gov

Dear friends,

Welcome to the 24th annual Kentucky Farm Bureau Beef Expo. The partnership of the Kentucky Department of Agriculture and Kentucky Farm Bureau makes the Beef Expo one of the most successful beef cattle events in the United States.

Hundreds of purebred, top-quality cattle from some of the best genetics in the nation will compete for more than \$100,000 in premiums. For the commercial operator, the popular pen heifer show and sale returns. Last year, cattle from 17 states sold for top dollar in the sale ring. I expect another strong showing this year.

On Sunday, more than 500 young people will compete for premiums, prizes and awards in the junior heifer, steer and market heifer shows. Many of the youth will test their skills in the annual judging contest. Competitions such as these help teach our young people values such as hard work and discipline that will carry over into their adult lives.

The Kentucky Department of Agriculture is an important part of the Beef Expo's success. KDA employees work the shows, sales and judging contests. I am pleased that the Department helps make this show possible.

While you're in Louisville, look for Kentucky Proud products for your dining and shopping enjoyment. Kentucky Proud is the Commonwealth's official farm marketing program. More than 1,800 producers, processors, retailers, restaurants, state parks and Kentucky Farm Bureau roadside markets are members of Kentucky Proud. When you try Kentucky Proud, you'll find out that nothing else is close.

I hope you have a successful Beef Expo and a pleasant stay in Louisville.

Sincerely,

RICHIE FARMER  
Commissioner of Agriculture  
Commonwealth of Kentucky



www.kyagr.com

## General Information

**Sale Location:** Kentucky Fair and Exposition Center, Louisville, KY

**Accommodations:** Beef Expo Headquarters, Fern Valley Hotel, 2715 Fern Valley Road, Louisville, KY 40213, (502) 964-3311, www.fernvalleyhotel.com Ask for Beef Expo block for special rate, cut-off date is February 19th.

**Health Papers:** Each lot will have an individual health certificate. Out of state buyers should be aware of any special requirements and/or permits of their respective states. The Expo veterinarian will be available to assist with permits.

**Trucking:** Consignors will assist with trucking arrangements. All Cattle must be out by Sunday, March 7th!

**Insurance:** Mortality insurance is available on your purchases. Please check with the sale management.

**Liability:** Neither the Kentucky Department of Agriculture, the seller, sale managers, nor any other person connected with the sale assumes any liability, legal or otherwise.

**Sale Terms & Conditions:** Cattle will be sold under the standard terms and conditions recommended by the American-International Charolais Association. The sale management is acting only as an agent and is not responsible for any disputes between the consignors and buyers. The sale management and facility assumes no responsibility for any accidents. Attendees do so at their own risk.

## 2010 Kentucky Farm Bureau Beef Expo Schedule

### BREED SHOWS

ANGUS – Friday, March 5th, 10:00 a.m.  
BEEFALO – Friday, March 5th, 2:30 p.m.  
CHAROLAIS – Saturday, March 6th, 12:00 p.m.  
CHIANGUS – Friday, March 5th, 1:00 p.m.  
LIMOUSIN – Saturday, March 6th, 10:00 a.m.  
HEREFORD – Friday, March 5th, 1:00 p.m.  
RED ANGUS – Friday, March 5th, 10:00 a.m.  
RED POLL – Friday, March 5th, 4:00 p.m.  
SALERS – Friday, March 5th, 11:30 a.m.  
SHORTHORN – Saturday, March 6th, 10:00 a.m.  
SIMMENTAL – Friday, March 5th, 4:00 p.m.  
PEN HEIFER SALE – Friday, March 5th, 2:00 p.m.

### BREED SALES

Saturday, March 6th, 12:00 p.m.  
Saturday, March 6th, 11:30 a.m.  
Saturday, March 6th, 4:00 p.m.  
Saturday, March 6th, 3:30 p.m.  
Saturday, March 6th, 3:00 p.m.  
Saturday, March 6th, 12:30 p.m.  
Saturday, March 6th, 10:00 a.m.  
Saturday, March 6th, 9:30 a.m.  
Saturday, March 6th, 10:00 a.m.  
Saturday, March 6th, 1:00 p.m.  
Saturday, March 6th, 11:00 a.m.  
Saturday, March 6th, 2:00 p.m.

## Don't Miss These Other Expo Events!!!!

- Junior Heifer, Steer and Market Heifer Jackpot Shows
- Trade Show and Youth
- Judging Contest

### Major Co-Sponsors:

Kentucky Farm Bureau, Kentucky Farm Credit, Merial, Nutrena, Kentucky Cattleman's Association, Burkman Feeds and The Kentucky Department of Agriculture  
Richie Farmer, Commissioner



## Kentucky Farm Bureau Federation

9201 Bunsen Parkway • P.O. Box 20700 • Louisville, KY 40250-0700  
Telephone (502) 495-5000 • Fax (502) 495-5114 • www.kyfb.com

MARK HANEY  
President  
JOHN C. HENRIKSEN  
First Vice President  
EDDIE MILLON  
Second Vice President  
DAVID S. BECK  
Executive Vice President

Welcome to the 2010 Kentucky Farm Bureau Beef Expo and Charolais Show and Sale. We are very proud to serve as the corporate sponsor of the expo.

With over 480,000 members, Kentucky Farm Bureau is actively involved in ensuring that Kentucky agriculture remains a strong and vital element of our Commonwealth's economy.

Beef cattle are an integral part of Kentucky agriculture. We applaud the efforts of those who work so diligently to improve an industry already known for its excellence, through events such as the 2010 Kentucky Farm Bureau Beef Expo.

Considering ever-increasing consumer demand for high-quality and safe food, efforts to improve Kentucky's beef cattle industry are now more important than ever. The Expo offers you the latest industry news and information, along with the opportunity to obtain some of the best breeding stock in the United States.

Again we welcome you to the 2010 Kentucky Farm Bureau Beef Expo, and hope the many valuable resources available here will benefit both you and your cattle operation.

Sincerely,

Mark Haney  
President

"Voice of Kentucky Agriculture"

# Herd Sire Prospects • Lots 1-9

## Lot 1 HAYDEN V270

03/22/2009 M779437

SCHURRTOP 5627  
LT WYOMING WIND 4020 PLD  
M411450

LT CHAP'S LADY 2170P

M6 GRID MAKER 104 PET  
TTR JAMIE S1402 ET  
EF1043967

THREE TREES JAMIE JO ET

BW: 98 lbs ADJ.WW: 652 lbs R: 124  
EPDs: 4.4 1.8 37 63

POLLED

WCR SIR DUKE 783  
MISS SUGAR VALLEY 908

LT UNLIMITED CHAPS 0109  
LT PRAIRIE MAIDEN 8095

WCR SIR TRADITION 066  
VCR MISS MAC IV 317

KEYS POLLED COMPASS  
WCR MISS MAC IV 5138 ET

4 7.2 22 1.1

- Check out the pedigree of this young herd sire prospect. A son of the breed leader Wyoming Wind out of a carcass great Grid Maker daughter. Top 15% for weaning weight and yearling weight.

Consigned by Hayden Farm



D&D Outlaw --- Sire of Lot 2

## Lot 3 MR PRIME TRIXIE

01/26/2009 M779465

JWK IMPRESSIVE D040 ET  
WCR PRIME CUT 764 PLD  
M460645

WCR MISS EASE 4314

BALDRIDGE KOJACK 29K  
STAR TRIXIE  
F1041909

BR STAR KATIE

BW: 80 lbs ADJ.WW: 743 lbs  
EPDs: 8.3 -1.0 27 49 8 4.9 22 0.4

WCR SIR FA MAC 2244  
HBR LADY LIZ 721 P

SKYMONT EASE 2078  
WCR MISS DUKE 9947

BALDRIDGE FASTTRACK 82F  
BALDRIDGE ELVIRA 95H

RVV STETSON 228 P  
HF MISS KATIE

- A herd bull prospect straight from a junior member's show string. He is eye appealing, structurally sound and naturally thick. Bred for calving ease and growth. Top 15% for calving ease.

Consigned by Russell Charolais

## Lot 2 RRC BILLY THE KID C936

03/17/2009 M777758

D&D OUTLAW  
M683196

LC SUSPECT 0109 P ET

HCVALENTINESTATEMENT9024

TO MS MALINDA 5028 ET  
F1018143

JWK MALINDA F211 ET

BW: 94 lbs ADJ.WW: 793 lbs R: 112  
EPDs: 6.7 -0.2 27 38 5 5.4 18

POLLED

LT WYOMING WIND 4020 PLD  
LC MISS LACI CAE 104

HCR STATEMENT 6079 POLL  
MISS HCR ALLYN 7024 POLL  
BCR POLLED UNLIMITED 003  
PP MISS SHANDY 214 R194

VCR SIR DUKE 914 PLD  
CF MARY 146 P

- Nice herd sire prospect in this yearling. Dam side is a "9108" out of the great Malinda cow family. Sire is the widely used Outlaw bull originating in the Doub Herd. Calving ease, high growth, Adj. WW: 793 lbs.

Consigned by R & R Charolais

## Lot 4 BG MR IMPRESS 801

10/18/2008 EM780250 POLLED

WCR SIR FA MAC 2244  
JWK IMPRESSIVE D040 ET  
M413653

HBR LADY LIZ 721 P

RC BUDSMYDAD 225 POLLED  
FRANZ MS LAURA E201  
F742702

FRC MISS FRANZ A094

EPDs: 1.9 1.2 20 39 5 -1.2 15 0.2

WCR SIR FAB MAC 809  
WCR MISS CENTURY 920 TWN

HBR IMPACT  
HBR LADY MACK 459 P

RC BUD 04 ET  
MISS SHOWGUN RC 416

KD DON QUIXOTE 35Y  
FRC MISS FRANZ U061

- Outstanding herd sire prospect in this D040 son. Extremely smooth muscle pattern in an attractive package. Structurally sound. BW: 86 lbs.

Consigned by Garrett Charolais



## Lot 6 COX SIR JUSTICE 1490

04/08/2008 M776028

PF IMPRESSED 620 P ET  
PF INFINITE JUSTICE 1001 PET  
M613588

VCR MISS DUCHESS 351 PLD

SKYMONT EASE 2078  
JCR MISS EASE 1012 PET  
F928730

WCR MISS DUKE 252

BW: 84 lbs  
EPDs: 3.7 0.9 20 32 3 4.6 13 0.5

POLLED

JWK IMPRESSIVE D040 ET  
MISS KC CROCUS 904 POLL

VCR SIR DUKE 914 PLD  
VCR MISS MAC'S PERFECTION

LT UNLIMITED EASE 9108  
MISS WC ROYAL SAMMY 114

BR DUKE 261  
WCR MISS FA MAC 261

- Tremendous herd sire potential in this coming two-year-old. Lots of natural thickness, style and growth in "1490". His dam is a top producing cow in the Cox herd. He will sire money making calves.

Consigned by Cox Charolais

## Lot 5 HUNTER'S EDGE 8901

09/01/2008 M769500

LT WESTERN SPUR 2061 PLD  
LT WESTERN EDGE 4057 PLD  
M686616

LT DUCHESS OF MAC 7076 P

LT WYOMING WIND 4020 PLD  
HAYDEN P28 ET  
F1008483

RMR KAITLYN ET

BW: 90 lbs ADJ.WW: 697 lbs  
EPDs: 4.2 -0.2 29 56 8 6.2 23 1.2

POLLED

EATONS PREDICTOR 9230  
LT MAIDEN'S BREEZE 8242P

BBCR DUKE'S SON 786 PLD  
BBCR MAXINE 429

SCHURRTOP 5627  
LT CHAP'S LADY 2170P

RMR COHIBA  
WHITE ROSE MABEL

- A powerful herd sire in Edge 8901. He has the power and growth to cover several cows. Extremely deep ribbed and long sided. Out of a great Hayden cow. Calving ease and high growth.

Consigned by Lane Farms

# Herd Sire Prospects • Lots 1-9 — Open Heifers • Lots 10-22

## Lot 7

### COX FASTRACK 1476

03/28/2008 M764686 POLLED

LT UNLIMITED EASE 9108 BALDRIDGE FASTTRACK 82F <small>M447863</small>	BCR POLLED UNLIMITED 003 PP MISS SHANDY 214 R194
BALDRIDGE SWEETHEART 53D	ASC ELIMINATOR 032 JB SWEETHEART 32A
DVCR DUKE 818 P JCR MISS DUKE 544 P <small>F1024324</small>	BR DUKE 261 WCR MISS MAC IV 534
JCR MS IMPRESS 1007 PET	JWK IMPRESSIVE D040 ET WCR MISS TRADITION 3575

BW: 78 lbs  
EPDs: 10.3 -1.8 24 39 14 5.5 26 -0.1

- Low birth weight and calving ease in Fastrack 1476. This two-year-old is long sided and smooth muscled to satisfy the industry. Cox bred bulls are performing great across the Southeast.

*Consigned by Cox Charolais*

## Lot 8

### MC MR VERN

03/03/2008 M756218 POLLED

LT UNLIMITED EASE 9108 THADS MR EASE <small>M677755</small>	BCR POLLED UNLIMITED 003 PP MISS SHANDY 214 R194
MC ELLIE CUT ABOVE TW	WCR PRIME CUT 764 PLD MSEXCEL350
CCF HARVEY'S ACTOR Y033P CCF ACTRESS 936 PLD <small>F868584</small>	SIR EC 20/20 PLD 92G LEMMON ACTRESS 2119
CCF MISS LAW 461 PLD	THE LAW ET WC LADY LUPE 9195 P

EPDs: N/A

- A heavy muscled two-year-old ready for service. Cow families represented in this pedigree have been proven producers for Montgomery Charolais. Straight from the show string with a great disposition.

*Consigned by Montgomery Charolais*

## Lot 9

### MC MR CHICO

11/03/2007 M756216 POLLED

LT UNLIMITED EASE 9108 THADS MR EASE <small>M677755</small>	BCR POLLED UNLIMITED 003 PP MISS SHANDY 214 R194
MC ELLIE CUT ABOVE TW	WCR PRIME CUT 764 PLD MSEXCEL350
HEP KING GRAZER 25A DKC LADY GUINEVERE 410P <small>F862748</small>	BR DUKE 261 HEP MISS JOAN 10W
DKC LADY ADRIANA 1106P	WCR SIR T 2254 CCF LADY ADRIAN

EPDs: N/A

- Mr. Chico is well known in the show ring around Kentucky. He is a many time champion out of a great cow. Thads Mr Ease is one of the best herd sires ever produced at Montgomery Charolais.

*Consigned by Montgomery Charolais*



## Lot 10

### BGF MS BRANDY 422 P

04/22/2009 F1109519 POLLED

LHD CIGAR E46 SR CIGAR 600 ET <small>EM733396</small>	LHD MR PERFECT Y416 LHD MS CLASSIC BELL X613
SR LADY EASE 914 ET	VCR SIR DUKE 914 PLD CCF LADY GERMAINE 718PET
LT WYOMING WIND 4020 PLD MISS WENDY 207 P <small>F950533</small>	SCHURRTOP 5627 LT CHAP'S LADY 2170P
SR LADY BRIANNA 950 ET	VCR SIR DUKE 914 PLD JWK BRIANNA D090 ET

BW: 80 lbs ADJ.WW: 689 lbs R: 113  
EPDs: 3.7 1.6 41 67 9 5.8 29

- "422" is the pick of the Burn's herd. Dam is an outstanding Wyoming Wind daughter. Sire is maternal brother to Field Rep. Outstanding pedigree in a great junior project. Top 5% for weaning weight in the breed.

*Consigned by Burns Charolais*

## Lot 11

### FFC MS CARMELA V16

04/21/2009 F1105134 POLLED

RC BUDSMYDAD 225 POLLED HAYDEN S108 <small>M722773</small>	RC BUD 04 ET MISS SHOWGUN RC 416
HAYDEN 316N	WCR PRIME TIME 908 P MC KEY MS HARDBOOT 701ET
RVV COOL BREEZE 267 P FFC MISS NARDIER R08P TW <small>F1032866</small>	LT WYOMING WIND 4020 PLD RVW PHYLLIS 960 P
MMS AC MAC REBEL 926 P	AC MAC NARDIER MMS LADY REBEL 819 PLD

BW: 90 lbs  
EPDs: 1.0 1.8 21 38 7 2.1 17

- Great show heifer prospect. Balanced EPDs. Great disposition. First offspring to sell sired by the popular S108.

*Consigned by Fairview Farms*

## Lot 12

### COX MISS FASTRACK 1652

04/08/2009 F1106030 POLLED

BALDRIDGE FASTTRACK 82F COX FASTRACK 1292 <small>M730849</small>	LT UNLIMITED EASE 9108 BALDRIDGE SWEETHEART 53D
JCR MS TRADITION 4112PET	WCR SIR TRADITION 066 WCR MISS DUKE 9026
WCR SIR TRADITION 066 WCR MS TRADITION 524 P <small>F1024112</small>	WCR SIR TRADITION 4402 IDEAL 809 45 OF 25
WCR MS PRIME TIME 3234	WCR PRIME TIME 908 P WCR MISS DUKE 3542 ETP

BW: 76 lbs  
EPDs: 5.8 -1.4 27 45 10 0.8 23

- A high growth young female out of time proven Wien genetics on the top and bottom of this pedigree with balanced EPDs.

*Consigned by Montgomery Charolais*

# Open Heifers • Lots 10-22



Three Trees Shauna 0626 ET -- Dam of Lot 13

## Lot 13 RRV MS GEORGINA 907

04/02/2009 EF1111186 POLLED

SCHURRTOP 5627	WCR SIR DUKE 783
LT WYOMING WIND 4020 PLD	MISS SUGAR VALLEY 908
M411450	
LT CHAP'S LADY 2170P	LT UNLIMITED CHAPS 0109
	LT PRAIRIE MAIDEN 8095
2UP PEUGEOT ET	2UP LIMITED EDITION L147
THREE TREES SHANNA 0626 ET	PALGROVE ESTELLA 14PKJ124E
F913782	
SKYMONT MISS EASE 2028	LT UNLIMITED EASE 9108
	SKYMONT MISS 0207

BW: 78 lbs  
EPDs: 3.3 1.7 23 40 8 6.5 19 1.1

- The 0626 x Wyoming Wind cross has produced many great daughters for Three Trees. They were the high sellers in past production sales. "907" will compete in the show ring and pasture. Balanced EPD's.

Consigned by Red River Valley Farm

## Lot 14 COX MISS TRACKER 1640

04/01/2009 F1111542 POLLED

LT UNLIMITED EASE 9108	LT UNLIMITED EASE 9108
COX SIR FASTRACK 1340	BALRRIDGE SWEETHEART 53D
M747870	
VCR PRINCESS 575 P	VCR SIR DUKE 9918 ET P
	VCR MISS TRADITION 261 P
CCR JACKPOT 1410K5 PET	WCR PRIME CUT 764 PLD
MS COOLEY JPOT 6601P3 ET	MS CCR W WIND 1410 G PET
F1004570	
EATONS CADET 0661	EATONS BEYOND 7243
	EATONS MISS CADET 6590

BW: 74 lbs  
Est. EPDs: 6.6 -2.6 22 37 6 6.3 17

- A moderate framed, extremely stylish female that can walk in the show ring or be a great brood cow. Lots of rib shape and muscle. She will be easy to find sale day.

Consigned by Cox Charolais

## Lot 15 COX MISS FASTRACK 1616

03/26/2009 F1106026 POLLED

LT UNLIMITED EASE 9108	BCR POLLED UNLIMITED 003
BALDRIDGE FASTRACK 82F	PP MISS SHANDY 214 R194
M447863	
BALDRIDGE SWEETHEART 53D	ASC ELIMINATOR 032
	JB SWEETHEART 32A
KEYS POLLED PILOT 169F	KEYS POLLED COMPASS
COX TOOTSIE 689 ET	MISS KEY COBB 205C
F913885	
HVR SARA B 6140	ABC B9
	HVR SARA 261

BW: 77 lbs  
EPDs: 8.2 -1.0 24 36 9 6.2 20 0.2

- This late March female has the style and balance for the show ring with the EPD's to make a great cow. She will be an asset to any herd.

Consigned by Montgomery Charolais



## Lot 17 MS LADY BRAVO 8334

03/10/2009 F1111074 POLLED

LT RIO BLANCO 1234 P	WCR PRIME CUT 764 PLD
LT RIO BRAVO 3181 P	LT PRAIRIE MAID 4054
M665507	
LT 7N OF DUKE 9083 PLD	WCR SIR DUKE 611
	LT UNLIMITED PRO 1128
LT ASSERTION 1277 P	EATONS ASSERT 9171
COX MISS ASSERTIVE 1334	LT ALLI'S CLASS 9140 P
F1076159	
SCR MISS HI PKG 3115	SCR HI GUY 0301
	SCR MISS MAC PKG 7138

EPDs: 1.1 0.9 26 50 7 1.3 20 0.7

- An outstanding show heifer prospect with lots of style and growth. She will be competitive at any level. Her dam has done a great job as a two-year-old to prove the brood cow potential in this lot.

Consigned by Millstone Charolais

## Lot 16 BCF MS BREE 311 P

03/11/2009 F1109507 POLLED

LHD CIGAR E46	LHD MR PERFECT Y416
SR CIGAR 600 ET	LHD MS CLASSIC BELL X613
EM733396	
SR LADY EASE 914 ET	VCR SIR DUKE 914 PLD
	CCF LADY GERMAINE 718PET
LT WYOMING WIND 4020 PLD	SCHURRTOP 5627
MISS BREEZY WIND 211 P	LT CHAP'S LADY 2170P
F950535	
SR BABE'S MAC 997 ET	JWK IMPRESSIVE D040 ET
	BVF BABE 3201

BW: 78 lbs  
ADJ.WW: 619 lbs R: 101  
EPDs: 3.0 1.6 33 56 8 5.4 24

- Dam is a great milking Wyoming Wind Daughter. "311" has the style and growth to be an excellent brood cow and be competitive in the show ring.

Consigned by Burns Charolais

## Lot 18 COX MISS ASSERTION 1601

03/10/2009 F1111525 Polled

EATONS ASSERT 9171	EATONS ASSERTIVE 4297
LT ASSERTION 1277 P	EATONS MISS GILMAN 6549
M620193	
LT ALLI'S CLASS 9140 P	SPARROWS ALLIANCE 513G
	LT PRAIRIE MAID 6021 PLD
4-L UNLIMITED YL06 PLD	BCR POLLED UNLIMITED 003
JCR MISS L06 4122 PET	4L MISS MAC P505
F1001525	
WCR MISS DUKE 9026	BR DUKE 261
	WCR MISS MAC 8401

BW: 90 lbs.  
Est. EPDs: 1.9 1.0 21 35 5 -1.6 16 0.5

- "1601" is destined to be a great cow. Her Dam "4122" is one of the best to ever leave Jensen's breeding program. Sired by Assertion, broodiness and easy fleshing will make this heifer profitable.

Consigned by Cox Charolais

# Open Heifers • Lots 10-22 — Bred Females • Lots 23-30

## Lot 19 HAYDEN V265

03/08/2009 F1106002 POLLED  
 SCHURRTOP 5627 WCR SIR DUKE 783  
 LT WYOMING WIND 4020 PLD MISS SUGAR VALLEY 908  
 M411450  
 LT CHAP'S LADY 2170P LT UNLIMITED CHAPS 0109  
 LHD CIGAR E46 LHD MR PERFECT Y416  
 CJC MS CIGAR K1501 LHD MS CLASSIC BELL X613  
 F918381 CJC MS SILVERBOE D1253 \$ SILVERBOE SON 627YB  
 CJC MS PLOY SUPREME X507  
 BW: 77 lbs ADJ.WW: 613 lbs R: 118  
 EPDs: 7.8 -1.0 29 46 3 8.0 18 1.3

- A structurally sound young female with an impeccable pedigree. Extremely balanced EPDs with a low birth weight of 77 lbs. Wyoming Wind crossed with Cigar makes a great brood cow.

Consigned by Hayden Farm

## Lot 20 HAYDEN V263

02/25/2009 F1110348 POLLED  
 RC BUD 04 ET BCR POLLED UNLIMITED 003  
 RC BUDSMYDAD 225 POLLED MISS ENTERPRISE 02 RC  
 M355527 MISS SHOWGUN RC 416 SPAINS SHOW ME POLLED  
 MISS ENTERPRISE RC 01  
 LT WYOMING WIND 4020 PLD SCHURRTOP 5627  
 FINKS EASE 3903 168 WW P LT CHAP'S LADY 2170P  
 F993740 FINKS MS EASE 16894914 WCR SIR DUKE 914 PLD  
 WCR MISS IMPRESSIVE 949P  
 EPDs: -5.8 5.2 35 57 7 -1.8 24 0.8

- A high growth heifer sired by Budsmydad and out of a tremendous Fink bred Wyoming Wind daughter. Style, growth and performance make this young lady worth seeing sale day.

Consigned by Hayden Farm

## Lot 21 MC MISS DAISY

02/24/2009 F1103642 POLLED  
 JWK IMPRESSIVE D040 ET WCR SIR FA MAC 2244  
 GP IMPRESSION K08 HBR LADY LIZ 721 P  
 M510185 DEROYAL LADY HI 5008 ET ROC HIPOCKETS MAC ET PLD  
 CARDINALS LADY R964  
 BR DUKE 261 BR DUKE 295  
 M6 MS DUKE 9235 PLD ET BR ANN 14  
 F839378 SCC 809 DANDY A42 WCR SIR FAB MAC 809  
 SCC JOE'S DANDY W53  
 EPDs: 1.3 0.8 N/A N/A N/A 2.0 N/A N/A

- High performance female that has the look to make a great brood cow. Dam side traces to the maternal sire Duke 261.

Consigned by Montgomery Charolais

## Lot 22 HAYDEN V257

02/17/2009 F1106001 POLLED  
 WCR SIR FA MAC 2244 WCR SIR FAB MAC 809  
 JWK IMPRESSIVE D040 ET WCR MISS CENTURY 920 TWN  
 M413653 HBR LADY LIZ 721 P HBR IMPACT  
 HBR LADY MACK 459 P  
 LHD CIGAR E46 LHD MR PERFECT Y416  
 HAYDEN T147 LHD MS CLASSIC BELL X613  
 F1070953 WYOWIND 066 COMBO GAL 01 WCR SIR TRADITION 066  
 WYOMING WIND DAUGHTER 86  
 BW: 93 lbs ADJ.WW: 628 lbs R: 121  
 EPDs: 2.2 3.1 35 59 4 5.4 22 0.3

- Show heifer alert with the pedigree combination in this female, greatness is expected. Thickness and structural soundness is abundant in this young lady. Top 10% in breed for weaning weight.

Consigned by Premier Cattle Company

## Lot 23 BG MISS IMPRESSIVE LAURA

11/02/2008 EF1111184 POLLED  
 WCR SIR FA MAC 2244 WCR SIR FAB MAC 809  
 JWK IMPRESSIVE D040 ET WCR MISS CENTURY 920 TWN  
 M413653 HBR LADY LIZ 721 P HBR IMPACT  
 HBR LADY MACK 459 P  
 RC BUD 04 ET  
 FRANZ MS LAURA E201 MISS SHOWGUN RC 416  
 F742702 FRC MISS FRANZ A094 KD DON QUIXOTE 35Y  
 FRC MISS FRANZ U061  
 EPDs: 1.9 1.2 20 39 5 -1.2 15 0.2

- Brood cow prospect that will be competitive in the show ring. Lots of performance with style to win. BW: 78 lbs. Breeding information announced sale day.

Consigned by Garrett Charolais



M6 Function 169 PET --- Sire of Lot 24

## Lot 25 MS FAST TIME 8241

10/02/2008 EF1111185 POLLED  
 LT UNLIMITED EASE 9108 BCR POLLED UNLIMITED 003  
 BALDRIDGE FASTTRACK 82F PP MISS SHANDY 214 R194  
 M447863 BALDRIDGE SWEETHEART 53D ASC ELIMINATOR 032  
 JB SWEETHEART 32A  
 WCR PRIME TIME 908 P WCR PRIME CUT 764 PLD  
 WCR MISS DAKOTA WIND7158  
 F952138 WCR MISS EASE 934 P SKYMONT EASE 2078  
 WCR MISS TERRIFIC7012ETP  
 EPDs: 6.7 -1.1 24 43 7 5.2 19 0.4

- An outstanding female out of one of the best cows to ever leave Cox Charolais. Dam has a text book udder and is youthful in her look. "8241" will be a great addition to any program. Breeding information announced sale day.

Consigned by Millstone Charolais

## Lot 24 RRV/MS WYNETT 8110 ET

10/10/2008 EF1103816 POLLED  
 LHD CIGAR E46 LHD MR PERFECT Y416  
 M6 FUNCTION 169 PET LHD MS CLASSIC BELL X613  
 M631721 VCR MISS MAC IV 317 WCR SIR FA MAC 2244  
 VCR MISS DUCHESS 113 PLD  
 LT WYOMING WIND 4020 PLD SCHURRTOP 5627  
 BLB MS WIND 438 P ET LT CHAP'S LADY 2170P  
 F1014924 SCF PAULA 190 BCR POLLED UNLIMITED 003  
 SCF CAROL 123  
 EPDs: 4.4 0.8 15 28 15 5.2 22 0.7

- A high growth Function 169 daughter that has the look to become a great cow. Her dam has been a consistent producing donor for RRV. Her flushmate sister sold in the Ten Grand Sale for \$2,500. Everyone thinks this is the best heifer of the flush. Breeding info announced sale day. Maternal sister to Lot 27.

Consigned by Millstone Charolais

# Bred Females • Lots 23-30 — Pairs/Breds • Lots 31-34

## Lot 26 MS IMPRESSIVE COW GIRL

09/15/2008 F1111187 POLLED

WCR SIR FA MAC 2244	WCR SIR FAB MAC 809
JWK IMPRESSIVE D040 ET	WCR MISS CENTURY 920 TWN
M413653	
HBR LADY LIZ 721 P	HBR IMPACT
	HBR LADY MACK 459 P
M6 COWBOY SCIENCE 0201PET	RC BUDSMYDAD 225 POLLED
PJ MS COWGIRL 410 P	MOORES MS MARK 7338
F999357	
PJ MISS HOPE 139 P	SMR HEYDAY 718 POLLED
	PJ MISS HALEY 911 P

EPDs: 8.8 0.1 23 41 7 7.3 19 0.2

- Impressive Cow Girl has been a favorite at Millstone since birth. She is extra thick, strong topped. An eye appealing brood cow look beyond compare. Breeding information announced sale day.

*Consigned by Millstone Charolais*



*BLB Ms Wind 438 P ET — Dam of Lots 27 and 24*

## Lot 28 MJC LADY DUKE U726

04/07/2008 F1086442 POLLED

WCR SIR DUKE 761	BR DUKE 261
SCC 761 DUKE 2539 ET	WCR MISS TRADITION 8335
M683220	
WCR MISS MAC IV 534	WCR SIR FA MAC 2244
	MISS DOC 509
LT WYOMING WIND 4020 PLD	SCHURRTOP 5627
THREE TREES LADY 0372 ET	LT CHAP'S LADY 2170P
F954157	
HBR LADY LIZ 721 P	HBR IMPACT
	HBR LADY MACK 459 P

BW: 80 lbs  
EPDs: 11.6 -2.1 26 39 8 9.0 21

- A nice made brood cow prospect. Traces back to Duke 761, the brood cow sire. All bred to Baldrige Kojack 29K on 7/16/09. Pasture exposed to MJC Choice Mark U323 8/1/09 to 3/1/10. examined safe.

*Consigned by M & J Charolais*

## Lot 27 RRV MISS WIND 8438

09/02/2008 F1111067 POLLED

HOODOO CROOK 9002	HOODOO 5076
THREE TREES HOODOO 1361	HOODOO ZL062
M619461	
SKYMONT MISS EASE 2028	LT UNLIMITED EASE 9108
	SKYMONT MISS 0207
LT WYOMING WIND 4020 PLD	SCHURRTOP 5627
BLB MS WIND 438 P ET	LT CHAP'S LADY 2170P
F1014924	
SCF PAULA 190	BCR POLLED UNLIMITED 003
	SCF CAROL 123

EPDs: 4.9 -0.2 11 19 6 5.7 11 0.5

- Nick has brought another good Hoodoo 1361 daughter to Louisville. This sire group of females have been sale toppers and good producers in the past. "8438" will follow in these steps. She is a moderate framed, thick topped easy fleshing heifer, ready to be a profit maker. Breeding info announced sale day. Maternal sister to Lot 24.

*Consigned by Red River Valley Farm*



## Lot 30 MJC MISS BENEFIT VALUE U054

01/08/2008 F1086434 POLLED

LT POLLED VALUE 9089	WCR PRIME CUT 764 PLD
MMF GRAZER VALUE 270	LT UNLIMITED MAID 7184 P
M694909	
LOVELY PERFORMER GRAZER	HEP KING GRAZER 25A
	LOVELY POLLED PERFORMER
WR BENEFIT 7418	ASC ELIMINATOR 032
MJC MISS BENEFIT 305 POLLED	WR MISS DUKETT 4422
F975311	
M MS PERFORMER TW 721	M SUPER PERFORMER TWIN 2
	JC CONSTRUCTRESS GAL 721

BW: 88 lbs  
EPDs: 2.6 0.8 23 45 15 4.5 26

- Moderate framed Polled Value grand daughter that has easy fleshing look. Balanced EPDs with lots of growth. Pasture exposed to MJC Choice Mark U323 8/1/09 to 3/1/10, examined safe.

*Consigned by M & J Charolais*

## Lot 29 MJC MISS LADY DUKE U026

02/09/2008 F1086436 POLLED

VCR SIR DUKE 914 PLD	WCR SIR DUKE 761
FSF SIR DUKE 914-3 PLD	WCR MISS MAC IV 534
M625682	
AC MS CARLA 920	4-L UNLIMITED YL06 PLD
	AC MISS CARLA 010
DVCR SIR MAC 610 P ET	WCR SIR FA MAC 2244
FIVE STAR LADY 2244 002	HBR LADY MACK 459 P
F931780	
DCF MS DYNAMO 003C PLD	DOUBLE-H SHOWMANS DYNAMO
	DCF MISS JULIE 137E

BW: 80 lbs  
EPDs: 6.6 -1.1 28 45 12 4.6 26

- Thick topped, young female tracing back to Duke 914. The Five Star Cattle have been productive for the Malone's. Pasture exposed to MJC Choice Mark U323 8/1/09 to 3/1/10, examined safe.

*Consigned by M & J Charolais*

## Lot 31 RRV MISS WINNIE 614

05/15/2006 F1062868 POLLED

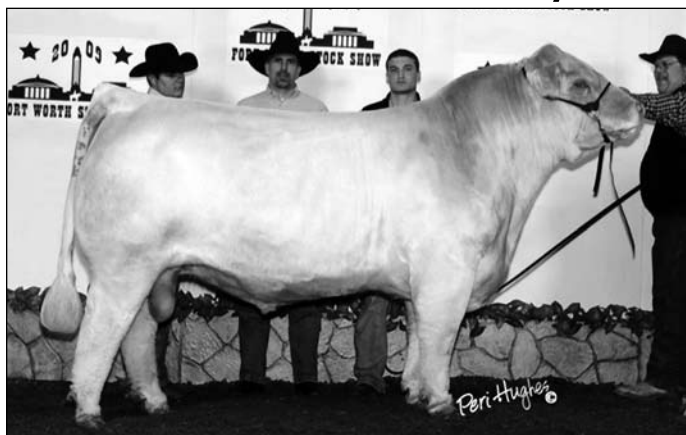
HOODOO CROOK 9002	HOODOO 5076
THREE TREES HOODOO 1361	HOODOO ZL062
M619461	
SKYMONT MISS EASE 2028	LT UNLIMITED EASE 9108
	SKYMONT MISS 0207
THREE TREES WIND 0383 ET	LT WYOMING WIND 4020 PLD
GP MS WIND & RAIN P14	THREE TREES NANCY 8121ET
F993731	
GS RAINDROP 1549 ET	RC RAINMAKER 883 POLLED
	RC MS BUD 418 POLLED

EPDs: 6.1 -0.4 14 31 6 3.9 13 0.4

- A moderate framed four-year-old that is an excellent producer. Her first calf was one of the heaviest weaning bulls at RRV. Very docile, nice addition to any herd. Pedigree very desirable in today's industry. Will calve before the sale to SR Blue Track 651, an outstanding LT Bluegrass son.

*Consigned by Red River Valley Farm*

# Pairs/Breds • Lots 31-34



Hayden S108 Pld --- Service Sire Lot 32

## Lot 32 PJ LADY TRADEMARK 415P

02/10/2004 F999249 POLLED

LHD ALI MARK T214  
CJC TRADEMARK H45  
M488766  
CJC MS PERFECT F57

SKYMONT EASE 2078  
PJ MISS EASE 847 P  
F858017

PJ LADY TUNDRA 626 P

BW: 85 lbs ADJ.WW: 617 lbs  
EPDs: 3.6 2.0 26 50 3 2.3 15 0.5

- Highly productive young cow. Pedigree full of breed greats. Sells bred to Hayden S108, Fairview's popular show bull.

Consigned by Fairview Farms

## Lot 33 RRV FOLLYS MEGAN 312 ET

05/04/2003 F994371 POLLED

LT WYOMING WIND 4020 PLD  
SPARROWS ALLIANCE 513G  
M469401

CHARDEL PARADISE 513E

CCR SCHURSHOT 1107F7 PET  
THREE TREES FOLLY 9264ET  
F861077

THREE TREES FOLLY A04FET

SCHURRTOP 5627  
LT CHAP'S LADY 2170P

HTA NORTHERN LIGHT 357C  
CHARDEL PARADISE 232B

SCHURRTOP 5627  
WCR MISS PERFECTION 1107

LT WYOMING WIND 4020 PLD  
DEROYAL FOLLY 4E05 ET

EPDs: 2.2 2.9 28 45 -3 4.2 11 0.8

- A nice mature cow with several great individuals in her pedigree. Her dam was a National Champion female that is still in production at RRV. Wind genetics on the top side creates a winning combination. Bull calf born 9/4/09 sired by LT Western Edge 4057 Pld, BW: 70 lbs.

Consigned by Millstone Charolais

## Lot 34 RRC HALLE 871

09/02/2008 RF704069 POLLED

D&D OUTLAW  
M683196

HCVALENTINESTATEMENT9024

RRC SHEDEVIL  
RF702345

RRC POWERBALL COW 131

BW: 72 lbs

EPDs: 3.3 -0.5 10 14 -2 5.1 3

- An outstanding composite female straight from the Luke Alexander show string. She is the right kind for today's industry. She is a many time champion and will be a consistent producer. Breeding information announced sale day.

Consigned by L&L Farms

# Sale Consignors

Burns Charolais  
Don & Fonda Burns  
Richmond, KY  
859-661-5349

L&L Farms  
Luke Alexander  
Berea, KY  
859-661-6277

Millstone Charolais  
Phil & Holt Tripp  
Shelbyville, KY  
502-834-0318

R&R Charolais  
Russell & Roger Clark  
Fowler, IN  
574-910-9898

Cox Charolais  
Mitchell Cox  
Campbellsville, KY  
270-465-7584

Lane Farms  
Hunter Hicks  
Versailles, KY  
859-873-0376

Montgomery Charolais  
Darby Montgomery & Thad Hulett  
Lancaster, KY  
859-339-3922

Red River Valley Farm  
John, Wes & Nicholas Chism  
Winchester, KY  
859-744-8909

Fairview Farms  
Kyle Shelton  
Rockport, IN  
270-314-1234

M&J Charolais  
Mike & Johnna Malone  
Cynthiana, KY  
859-588-0356

Premier Cattle Company  
Jacob & Lee Miller  
Bardstown, KY  
502-348-3454

Russell Charolais  
Bobby Russell  
Glasgow, KY  
270-678-3221

Garrett Charolais  
Bill Garrett  
Crossville, TN  
931-265-3151

Hayden Farm  
James Hayden  
Bardstown, KY  
502-349-0128

www.edjecast.com

To register and bid:  
 • Visit the EDJE Cast website at www.edjecast.com  
 • Click the "NEED TO REGISTER" button.  
 • Create a username and password then fill in the requested information. Click the "REGISTER" button.  
 • You will receive an email validation of your username and be directed back to the EDJE Cast home page. Log in using your newly created username and password.  
 • Once you have logged in, select the specific event or auction and click "REGISTER TO BID."  
 • Fill in all requested information, including the banking info, read and agree to the Terms and Conditions, then click the "Submit" button. You will be assigned and emailed a bidder number.  
 • The auction video will start about 15 minutes prior to the auction.  
 • Click the "View EDJE Cast Auction" to view the auction.  
 • After the sale, please contact the sale manager to arrange payment for your online purchases. Delivery is the responsibility of the buyer and should be arranged with sale management. Liability becomes the sole responsibility of the buyer upon the sale of the animal.

We are pleased to provide live web casting of this auction through EDJECast.com, allowing you to view and bid online, as if you were at the auction.

We recommend that you have high speed internet access to bid online. Dial-up or poor connections will slow the posting of your bid. If you have questions, contact Jennifer Smith at 866-839-3353.

EDJE